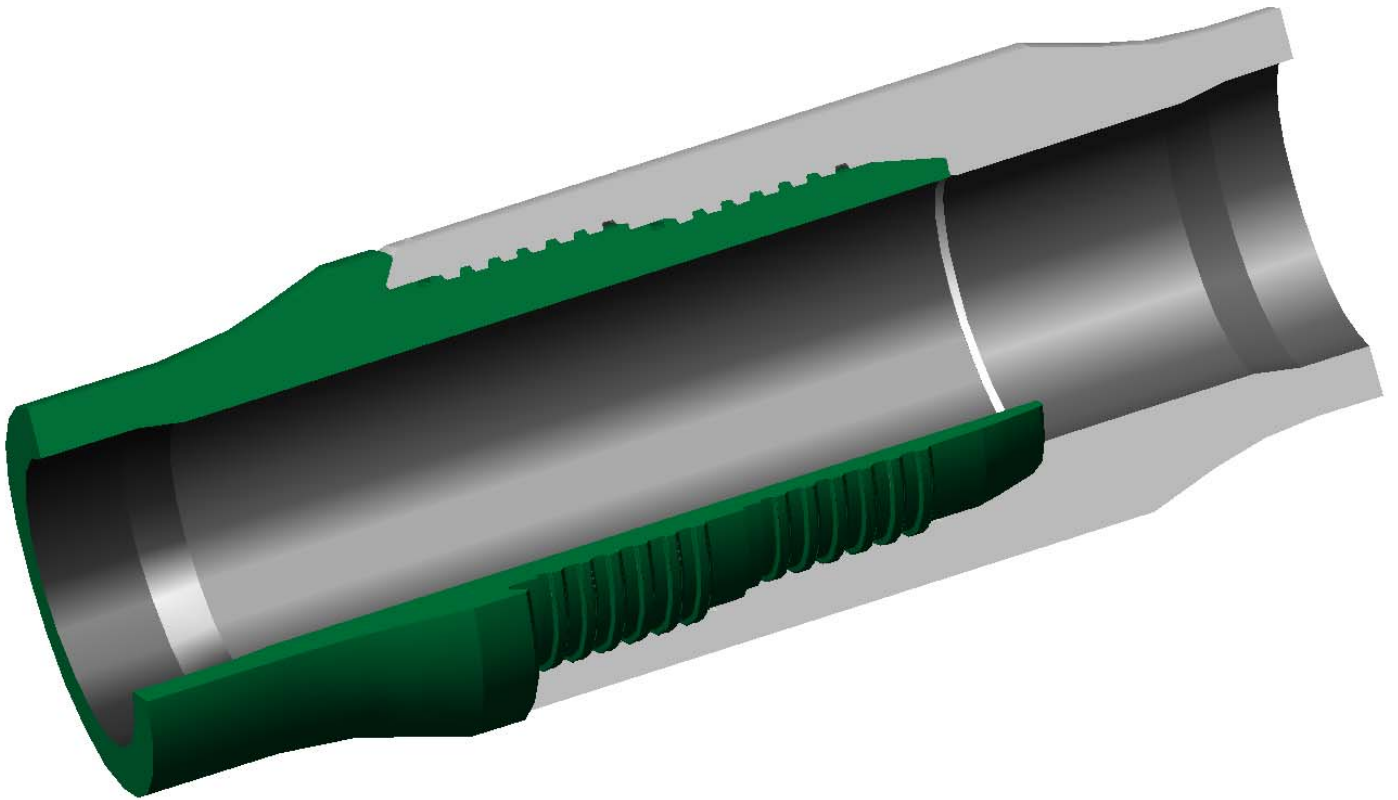


# NORRIS



## INTERNATIONAL SERVICES



*3011 West Admiral Doyle Drive  
New Iberia, LA 70560  
Phone: 337-367-2844  
Fax: 337-367-2099*



# NORRIS



## INTERNATIONAL SERVICES

### NTS-8 CONNECTION DATA

		PIPE			CONNECTION					MAKE-UP TORQUE IN LBS/FT								
SIZE	NOMINAL WEIGHT	WALL THICKNESS	INSIDE DIAMETER	API DRIFT DIAMETER	CONNECTION EFFICIENCY	TURNED O.D.	SPECIAL CLEARANCE O.D.	I.D. BORE	THREADS PER INCH	J-55			L-80 / N-80			P-110		
										MIN.	OPT.	MAX.	MIN.	OPT.	MAX.	MIN.	OPT.	MAX.
IN.	LB/FT	IN.	IN.	IN.	%	IN.	IN.	IN.		MIN.	OPT.	MAX.	MIN.	OPT.	MAX.	MIN.	OPT.	MAX.
3/4"	1.200	0.113	0.824	0.672	100	1.327	1.300	0.687	8	205	245	300	300	340	380	300	340	380
"	1.500	0.154	0.742	0.648	100	1.327	"	0.687	8	205	245	300	300	340	380	300	340	380
1"	1.800	0.133	1.049	0.955	100	1.552	1.525	0.970	8	305	345	400	390	445	500	390	445	500
"	2.250	0.179	0.957	0.848	100	1.600	"	0.864	8	305	345	400	390	445	500	390	445	500
1-1/4"	2.400	0.140	1.380	1.286	100	1.883	1.858	1.300	8	410	445	500	600	690	780	600	690	780
"	3.020	0.191	1.278	1.184	100	1.927	"	1.218	8	410	445	500	600	690	780	600	690	780
"	3.240	0.198	1.264	1.170	100	1.927	"	1.200	8	410	445	500	600	690	780	600	690	780
1-1/2"	2.900	0.145	1.610	1.516	100	2.113	2.094	1.530	8	610	700	800	800	900	1000	800	900	1000
"	3.640	0.200	1.500	1.406	100	2.162	"	1.440	8	610	700	800	800	900	1000	800	900	1000
"	4.190	0.219	1.462	1.368	100	2.179	"	1.390	8	610	700	800	800	900	1000	800	900	1000
2-1/16"	3.250	0.156	1.751	1.657	100	2.335	2.295	1.700	8	705	810	900	920	1015	1110	920	1015	1110
"	4.500	0.225	1.613	1.519	100	2.460	2.407	1.550	8	705	810	900	920	1015	1110	920	1015	1110
2-3/8"	4.700	0.190	1.995	1.901	100	2.705	2.655	1.945	8	1050	1200	1350	1510	1710	1910	1510	1710	1910
"	5.300	0.218	1.939	1.845	100	2.750	2.700	1.890	8	1050	1200	1350	1510	1710	1910	1510	1710	1910
2-7/8"	6.500	0.217	2.441	2.347	100	3.220	3.166	2.371	8	1525	1710	1900	2110	2360	2610	2110	2360	2610
3-1/2"	9.300	0.254	2.992	2.867	100	3.915	3.859	2.920	8	2600	2750	3150	3000	3410	3820	3000	3410	3820
"	10.300	0.289	2.922	2.797	100	3.980	3.914	2.870	8	2600	2750	3150	3000	3410	3820	3000	3410	3820
4.0"	11.000	0.262	3.476	3.351	100	4.417	4.359	3.395	8	3100	3450	3810	3500	3945	4390	3500	3945	4390
4-1/2"	12.750	0.271	3.958	3.833	100	4.920	4.861	3.865	8	3550	4000	4350	4500	5055	5610	4500	5055	5610
"	13.500	0.290	3.920	3.795	100	4.955	4.890	3.840	8	3550	4000	4350	4500	5055	5610	4500	5055	5610

Notes: All NTS-8 connections of any given size above are interchangeable.

All NTS-8TR (connections with seal ring groove) utilize the same connection and torque values.

All NTS-8 connections are rated equal to or above 100% of the pipe body minimum yield.

All NTS-8 connections are interchangeable with Hydriil™ CS®.

This technical data is for general information only. Norris makes no warranty for damages due to its use.



## INTERNATIONAL SERVICES NTS-8 PERFORMANCE DATA

			PIPE BODY MINIMUM YIELD LOAD			SETTING DEPTH (SAFETY FACTOR=1.5)		
SIZE	NOMINAL WEIGHT	WALL THICKNESS	J-55	L-80 N-80	P-110	J-55	L-80 N-80	P-110
INCHES	LB/FT	INCHES	LB	LB	LB	FT	FT	FT
3/4"	1.200	0.113	18,150	26,750	36,750	10,170	14,780	20,330
"	1.500	0.154	23,900	34,750	47,850	10,580	15,420	21,190
1"	1.800	0.133	27,150	39,700	54,100	10,070	14,630	20,110
"	2.250	0.179	35,000	51,000	70,125	10,400	15,140	20,830
1-1/4"	2.400	0.140	36,950	53,175	73,750	10,220	14,860	20,410
"	3.020	0.191	48,250	70,750	97,000	10,710	15,560	21,410
"	3.240	0.198	50,000	72,950	100,000	10,290	14,980	20,580
1-1/2"	2.900	0.145	44,000	64,000	87,950	10,110	14,710	20,210
"	3.640	0.200	58,875	85,150	117,175	10,750	15,640	21,520
"	4.190	0.219	63,750	92,800	127,150	10,120	14,720	20,240
2-1/16"	3.250	0.156	51,150	74,950	102,950	10,540	15,340	21,090
"	4.500	0.225	71,150	103,950	142,975	10,590	15,390	21,170
2-3/8"	4.700	0.190	71,900	104,100	143,175	10,170	14,790	20,350
"	5.300	0.218	81,050	118,125	162,200	10,210	14,870	20,440
2-7/8"	6.500	0.217	99,750	145,000	199,100	10,230	14,870	20,440
3-1/2"	9.300	0.254	142,150	207,050	284,975	10,220	14,850	20,420
"	10.300	0.289	160,175	233,075	320,750	10,380	15,090	20,760
4.0"	11.000	0.262	169,050	246,025	338,275	10,250	14,920	20,510
4-1/2"	12.750	0.271	198,000	288,000	396,050	10,350	15,060	20,710
"	13.500	0.290	211,000	306,950	421,975	10,420	15,150	20,830

Notes: All NTS-8 Connections are rated equal to or above 100% of the pipe body minimum yield.  
 All NTS-8TR (connections with seal ring groove) utilize the same connection and torque values.  
 All NTS-8 connections are rated equal to or above 100% of the pipe body minimum yield.  
 All NTS-8 Connections are interchangeable with Hydрил™ CS®.

This technical data is for general information only. Norris makes no warranty for damages due to its use.



## NTS-6 TECHNICAL DATA

		PIPE			CONNECTION				MAKE-UP TORQUE IN LBS/FT						PIPE BODY MINIMUM YIELD LOAD		SETTING DEPTH (SAFETY FACTOR=1.5)	
SIZE	NOMINAL WEIGHT	WALL THICKNESS	INSIDE DIAMETER	API DRIFT DIAMETER	TURNED O.D.	SPECIAL CLEARANCE O.D.	I.D. BORE	THREADS PER INCH	L-80 / N-80			P-110			L-80 / N-80	P-110	L-80 N-80	P-110
									MIN.	OPT.	MAX.	MIN.	OPT.	MAX.				
IN.	LB/FT	IN.	IN.	IN.	IN.	IN.	IN.		MIN.	OPT.	MAX.	MIN.	OPT.	MAX.	LB	LB	FT	FT
2-3/8"	5.95	0.254	1.867	1.773	2.906	2.782	1.805	6	2200	2500	2800	2725	3062	3400	135,000	186,100	15,100	20,500
2-3/8"	6.2	0.261	1.853	1.759	2.937	2.794	1.795	6	2200	2500	2800	2725	3062	3400	139,000	190,800	14,250	19,500
2-3/8"	7.7	0.336	1.703	1.609	3.125	3.002	1.645	6	2200	2500	2800	2725	3062	3400	172,000	237,000	14,230	19,490
2-7/8"	7.9	0.276	2.323	2.229	3.437	3.312	2.265	6	3000	3400	3800	3500	3950	4400	180,000	248,000	15,100	20,600
2-7/8"	8.7	0.308	2.259	2.165	3.500	3.365	2.200	6	3000	3400	3800	3500	3950	4400	198,800	273,000	15,150	20,600
2-7/8"	9.5	0.340	2.195	2.101	3.625	3.419	2.130	6	4400	5000	5600	5500	6200	6900	216,800	298,000	14,900	20,100
2-7/8"	10.7	0.392	2.091	1.997	3.687	3.595	2.030	6	4400	5000	5600	5500	6200	6900	244,800	336,100	14,940	20,130
3-1/2"	12.95	0.375	2.750	2.625	4.312	4.189	2.687	6	5500	6200	6900	7000	7900	8800	294,750	405,000	14,860	20,020
3-1/2"	15.8	0.476	2.548	2.423	4.500	4.474	2.485	6	5500	6200	6900	7000	7900	8800	361,900	497,000	14,970	20,140
4.000	13.4	0.330	3.340	3.215	4.625	4.514	3.275	6	5600	6250	6900	7200	8000	8800	304,200	418,700	14,840	19,970
4-1/2"	15.5	0.337	3.826	3.701	5.125	5.021	3.765	6	6000	6750	7500	7500	8450	9400	352,800	485,000	14,890	19,990
4-1/2"	19.2	0.430	3.640	3.515	5.312	5.170	3.560	6	7500	8450	9400	9500	10500	11500	440,000	605,000	14,990	20,140

Notes: All NTS-6 connections of any given size above are interchangeable.

All NTS-6TR (connections with seal ring groove) utilize the same connection and torque values.

All NTS-6 connections are rated equal to or above 100% of the pipe body minimum yield.

All NTS-6 connections of any given size above are interchangeable with Hydril™ PH6™.

This technical data is for general information only. Norris makes no warranty for damages due to its use.